

Danforth
Museum of Art



OFF THE
WALL

ANNUAL JURIED EXHIBITION CATALOG

JUNE 11 - AUGUST 7, 2011

JUROR'S STATEMENT

When I accept an invitation to serve as a juror for an exhibition, it is usually for two reasons. First, as a curator of contemporary art, I try to support the efforts of working artists in a variety of ways, as well as the regional art organizations that devote their resources to keep those artists' works in the public eye. Second, it is an invaluable opportunity to be introduced to the work of a number of artists whom I may not know. Indeed, both reasons were true on this occasion, the Danforth Museum's annual *Off the Wall* juried exhibition.

The challenge, of course, in selecting work for a group exhibition like this is that there is such a range of intentions, media, and levels of experience represented by the works submitted. Without having the usual knowledge of who made the work and what a particular piece might mean in the context of what an artist has done previously, I rely almost exclusively on what I can see—what an object/image makes apparent just by looking carefully. I look for art that shows me a meaningful engagement between its maker and its subject, work that can sustain more than one look/listen, and visual experiences that claim their place on the wall/floor.

Amidst the displays of individualism evident in these artists' practices, several areas of shared interest are worth noting: conceptual approaches to landscape, imaginative uses of found objects, the persistence of abstraction, the figure as a hybrid of biography and fiction, the relation between electronic media and more traditional materials, and artists in dialogues with other artists (Carl Andre, Frederic Church, David Hammond, and Yves Tanguy, among others).

Contemporary art, wherever it is made and whatever its format or medium, can be an important tool for learning about the world in which we live and can re-ignite the creative core in each of us. Artists, while oftentimes finding inspiration in the familiar, also always have appealed to our need to transcend the ordinary. Visitors to the Danforth's *Off the Wall* exhibition will find many artists from the region who are keeping that tradition alive.

I wish to extend my thanks to all the artists who shared their work for consideration and my congratulations and genuine appreciation to Katherine French and the staff of the Danforth Museum, in particular, Kristina Wilson, for her expert organizational skills and warm collegiality.

Susan L. Stoops
Curator of Contemporary Art

CHRISTIE ALLAN-PIPER

West Newton, MA

Mother and Child, 2009
double sided pastel on paper
59" x 32"
Not for Sale

EDUCATION

School of the Museum of Fine Arts/Tufts University, BA
Stanford University, MA

RECENT EXHIBITIONS

Newton Open Studios Fall Juried Show, Newton Cultural Center, Newton, MA, 2010

Paint! National Juried Show, South Shore Art Center, Cohasset, MA, 2007

Pastel Society of America, Eastern Shore Association Exhibition, Fairbanks, AL, 2007

The Figure in Pastel, Butler Institute of America, Youngstown, OH, 2007



KATHLEEN GERDON ARCHER

Beverly, MA



Rose's Favorite Towel, 2010
photography
36" x 24"
\$600

EDUCATION

Montserrat College of Art, BFA

RECENT EXHIBITIONS

Winter Member's Show, Copley Society, Boston, MA, 2011

The Mapmaker's Dream, St John's Church, Beverly Farms, MA, 2010

Northeast Prize Show, Cambridge Arts Association, Cambridge, MA, 2010

Choice, Carney Gallery Regis College, Weston MA, 2009

LARAINÉ ARMENTI

Ashland, MA



Rose and Scone, 2010
oil on paper
12 1/2" x 16"
Not for Sale

EDUCATION

Rhode Island School of Design, BFA

RECENT EXHIBITIONS

11th Annual Francis N. Roddy Open Competition,
Concord Art Association, Concord, MA, 2010

Icons and Altars, New Art Center, Newton, MA, 2010

10th Annual Francis N. Roddy Open Competition,
Concord Art Association, Concord, MA, 2009

Eat the Art, Bunker Hill Community College Art Gallery,
Charlestown, MA, 2009

AMY THOMPSON AVISHAI

Medford, MA

Secret at School, El Hanchane, Morocco, 2008
archival ink jet photograph
12" x 18"
\$730

EDUCATION

School of Visual Communication, Ohio University, MA

RECENT EXHIBITIONS

Solo Exhibition, French Cultural Center of Boston,
Boston, MA, 2011

Across the Divide, Critical Mass 2010, Photographic Center
Northwest, Seattle, WA, Newspace Center for Photography,
Portland, OR and RaKyo Photo Center, San Francisco, CA, 2011

15th Juried Group Exhibition, Griffin Museum of Photography,
Winchester, MA and Panopticon Gallery of Photography, Boston,
MA, 2009



JIM BAVOSI

North Grafton, MA



Factory Window, 2009
enhanced digital photography
10" x 15"
\$495

EDUCATION

Southeastern Massachusetts University

EVELYN BERDE

Brookline, MA

Don't Move!, 2009
mixed media and paint
27" x 12"
Not for Sale

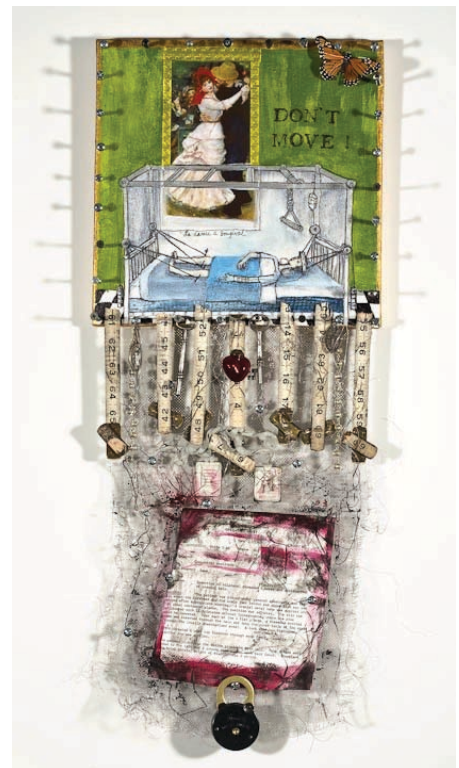
EDUCATION

Massachusetts College of Art and Design, BSE

RECENT EXHIBITIONS

Evelyn Berde: Leaving the River, Arnheim Gallery,
Massachusetts College of Art and Design, 2009

The Children's Garden Installation, Anesthesia Department
Library, Children's Hospital, Boston, MA, 2009



EUGENIE LEWALSKI BERG

Shrewsbury, MA

Rapid Square, 2007

graphite on paper

14" x 14"

\$850

Two Stacks, 2007

graphite on paper

14" x 14"

\$850

Bundles, 2007

graphite on paper

14" x 14"

\$850

EDUCATION

Massachusetts College of Art and Design, BFA

School of the Museum of Fine Arts/Tufts University, MFA

RECENT EXHIBITIONS

New England/New Talent, Fitchburg Art Museum, Fitchburg, MA, 2008

Annual AIDS Benefit, Barbara Krakow Gallery, Boston, MA, 2007



SORIN BICA

Framingham, MA



The Story Teller, 2010

oil on contact paper

42" x 44"

\$3,500

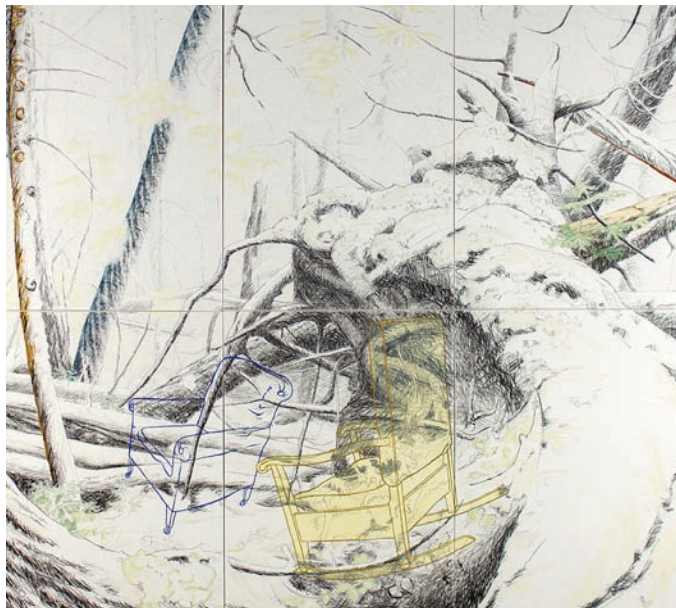
RECENT EXHIBITIONS

10 x 10 Exhibition, Fountain Street Fine Art Gallery, Framingham, MA, 2011

Framingham Library Artists Show, Framingham Public Library, Framingham, MA, 2011

PRILLA SMITH BRACKETT

Boston, MA



2nd Prize Winner of Off the Wall

Family Patterns #8, 2010

graphite, cretacolor, acrylic, oil on panel
80" x 90"

\$12,000

EDUCATION

University of Nebraska, MFA

RECENT EXHIBITIONS

Legacies: Paintings by Matt Brackett & Prilla Smith Brackett,
Historic Northampton Museum, Northampton, MA, 2011

Place, NK Gallery, Boston, MA, 2011

Prilla Smith Brackett: Places of the Heart, Hess Gallery,
Pine Manor College, Chestnut Hill, MA, 2010

Edges of Memory: Prilla Smith Brackett, Farnham Gallery,
Simpson College, Indianola, IA, 2010

PENNIE BRANTLEY

Waltham, MA

Protecting Our Inner Selves From Encroachment, 2006

oil on canvas

48" x 72"

Not for Sale

EDUCATION

Kansas City Art Institute

Ontario College of Art

RECENT EXHIBITIONS

*The National Association of Women Artists 122nd Annual
Exhibition*, Sylvia Wald and Po Kim Gallery,
New York, NY, 2011

2010 Artists of the Mohawk Hudson Region, Hyde Collection,
Glens Falls, NY, 2010

Pennie Brantley and Robert Morgan: Passing Through This World,
Eclipse Mill Gallery, North Adams, MA, 2008



LINDA LESLIE BROWN

Boston, MA

Vehicle Array, 2011

wood, wire, paper clay, plastic, paint, live plants
49" x 73" x 38"
\$3,400

EDUCATION

Rhode Island School of Design, MA
School of the Museum of Fine Arts, Studio Diploma

RECENT EXHIBITIONS

Habits of Growth, Kingston Gallery, Boston, MA, 2011

Wellfleet Wind Drala Detector, Wellfleet, MA, 2010

150x150 Invitational, Laconia Gallery, Boston, MA, 2010

Ice Box, FPAC Fort Point Winter Solstice Public Art Program,
Boston, MA, 2010



3rd

JESSICA BURKO

Jamaica Plain, MA



My Funny Family, 2010

mixed media with photography, paper and thread
19" x 11"
\$425

EDUCATION

Rhose Island School of Design, BFA
Rochester Institute of Technology, MFA

RECENT EXHIBITIONS

JP To Me: Defined by Light, Uforge Gallery,
Jamaica Plain, MA, 2011

From Our House to Yours, Massachusetts Statehouse,
Boston, MA, 2011

Media Mix National Juried Show, South Shore Arts Center,
Cohasset, MA, 2010

VOICES: Mothers Who Create, The Little Gallery Under The
Stairs, Lynn, MA, 2010

ANN CHRISTENSEN

Chelmsford, MA



I'll Be Back, 2010
oil on birch-cradled board
16" x 20"
\$1,850

EDUCATION

School of the Museum of Fine Arts

RECENT EXHIBITIONS

Massachusetts Artists 2011, Brush Gallery, Lowell, MA, 2011

Blue, Cambridge Art Association, Cambridge, MA, 2010

Half Crown Design & William Henry Furniture,
Cambridge, MA, 2010

Gleason Library, Carlisle, MA, 2010

LESLEY COHEN

Newton, MA

(Left) *Structure #7*, 2011
charcoal and pastel
15" x 22"
\$950

(Right) *Structure #9*, 2011
charcoal and pastel
15" x 22"
\$950

EDUCATION

State College of New York, Buffalo, BS
Boston University, MFA

RECENT EXHIBITIONS

Community of Artists, Danforth Museum of Art,
Framingham, MA, Juried, 2010

The Creative Process, New Art Center, Newton, MA, 2010

Black and White Excellence, Newton Cultural Center, MA, 2010



JODI COLLELA

Somerville, MA

Marrow, 2011
found driftwood, wool
22" x 10" x 8"
\$2,200

EDUCATION

Boston University, BA

RECENT EXHIBITIONS

GREEN, The Textile Museum, Washington, DC, 2011

Scale, Attleboro Arts Museum, Attleboro, MA, 2011

New England Contemporary Fiber Exhibition, Rochester, NY, 2011

Growth and Decay, Cambridge Art, 2011



ANNA CONIARIS COMOLLI

Gloucester, MA



Essex Marshland and Hog Island, 2007
oil on masonite
22" x 33"
\$20,000

EDUCATION

Massachusetts College of Art and Design, BFA

RECENT EXHIBITIONS

Women Artists from the Cape Ann Museum Collection,
Cape Ann Museum, Gloucester MA, 2009

Cool Summer Reading: Artists and Art Books, Sawyer Free
Library, Gloucester, MA, 2007

A Place of Her Own: Camille Claudel, Gloucester Stage
Theatre, Gloucester, MA, 2006

MARCIA COOPER

Waban, MA



Step Into My Room, 2009

oil

25" x 31"

Not for Sale

EDUCATION

Boston University

RECENT EXHIBITIONS

Luckart Gallery, Auburndale, MA, 2011

Arnold Arboretum, Jamaica Plain, MA

DeCordova School Gallery, DeCordova Sculpture Park and Museum, Lincoln, MA

MARIE PICARD CRAIG

Natick, MA

Doorway No. 1, 2006

photography

18" x 24"

\$275

EDUCATION

Clark University, MA
Massachusetts College of Art and Design

RECENT EXHIBITIONS

Unscripted, Fountain Street Fine Art, Framingham, MA, 2011

Insatiable: Our Rapacious Appetite for More, Women's Studies Research Center, Brandeis University, Waltham, MA, 2011

Chair Story Installation, Gallery XIV, Framingham, MA, 2010

Community of Artists, Danforth Museum of Art, Framingham, MA, 2010



SUZANNE CROCKER

South Hamilton, MA

The Heart of the Matter, 2010
oil on canvas
48" x 48"
\$7,500

EDUCATION

University of Pennsylvania, BA

RECENT EXHIBITIONS

Lydon Contemporary, Chicago, IL, 2010

Three Artist Exhibition, North Water Gallery,
Edgartown, MA, 2010

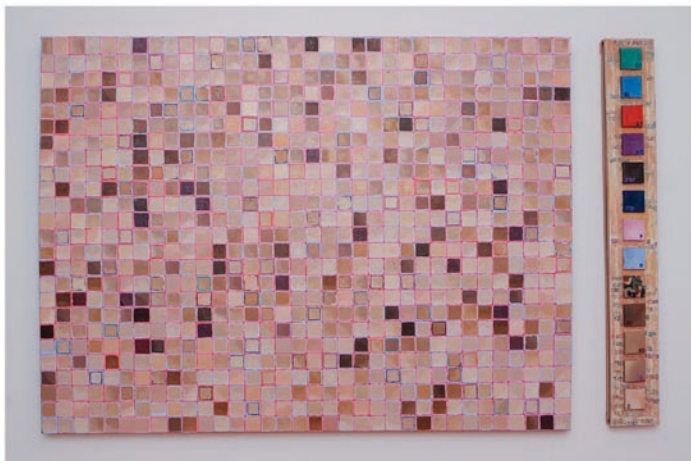
Gardner Colby Gallery, Naples, FL, 2010

Three Artist Exhibition, North Water Gallery,
Edgartown, MA, 2009



LYNDA MICHAUD CUTRELL

Marblehead, MA



Census Data, 2011
oil on canvas
36" x 52"
\$2,500

EDUCATION

School of the Museum of Fine Arts, Studio Diploma

RECENT EXHIBITIONS

Fifth Year Exhibition, School of the Museum of Fine Arts,
Boston, MA, 2011

Vineyards and Vines, The Wine Gallery, Brookline, MA, 2010

Artist Choice, Somerville Museum, Somerville, MA, 2010

Portraits of Nature, Enterprise Center, Salem, MA, 2009

darkfantom84

Framingham, MA



I'm too sad to tell you by Bas Jan Ader, 2011
video
Not for Sale

Trabum (Element Series) by Carl Andre, 2011
foamcore, tape, and contact paper
36" x 36" x 36"
Not for Sale

EDUCATION

Hartford Art School, BFA

RECENT EXHIBITIONS

London International Creative Competition Shortlist, 2010



JENNIFER DAY

Newburyport, MA

Congestus II, 2009
oil on panel
36" x 48"
\$6,000

EDUCATION

Bowdoin College, BA
University of Pennsylvania, MFA

RECENT EXHIBITIONS

Summer Members' Show: Wanderlust, Copley Society of Art,
Boston, MA, 2010

Jennifer Day: Air and Ocean, Bromfield Gallery,
Boston, MA, 2009

Air and Ocean: New Works By Jennifer Day, Cape Cod Museum
of Art, Dennis MA, 2009

Patron's Choice 2008, Copley Society of Art, Boston, MA, 2008



ADRIENNE DER MARDEROSIAN

Belmont, MA

Tattoo Trails, 2010
work on paper
18" x 5"
\$1,800

EDUCATION

Tufts University, BS

RECENT EXHIBITIONS

New Works, Belmont Memorial Library, Belmont, MA, 2010

The Armenian Genocide - 95 Years In Remembrance,
University of Rhode Island, Providence, RI, 2010



SHARON DEVEREUX

Woburn, MA



Raining Money, 2008
digital photography
22" x 28"
\$525

PAUL DEVINE

Woburn, MA



Runner, 2011
acrylic on watercolor paper
15" x 22"
\$400

RECENT EXHIBITIONS

Melrose Arts Festival, Melrose, MA, 2011

Off the Wall, Danforth Museum of Art, Framingham, MA, 2010

ArtSpace Gallery, Northern Essex Community College,
Haverhill, MA, 2008

AILEEN O. ERICKSON

Cambridge, MA

Sleeping Dog with Mercury, 2008
acrylic, charcoal and watercolor
22" x 31"
\$2,500

RECENT EXHIBITIONS

This Must Be The Place, Mills Gallery, Boston, MA, 2011

Objects Falling into Place/Space, South End Branch Library,
Boston, MA, 2010

Amalgam, Mills Gallery, Boston, MA, 2009

Art and Author Exhibition, 45th Reunion, Concord Academy,
Concord, MA, 2008



CATHERINE EVANS

Maynard, MA

14.2 Miles of Gimp, 2011
hand-braided plastic gimp and spools
22'
Not for Sale

RECENT EXHIBITIONS

Struggling with Entropy, Solo Show, ArtSpace Maynard,
Maynard, MA, 2011

Media, Materials and Meaning, Cambridge Art Association,
Cambridge, MA. Juror's Choice Award, 2011

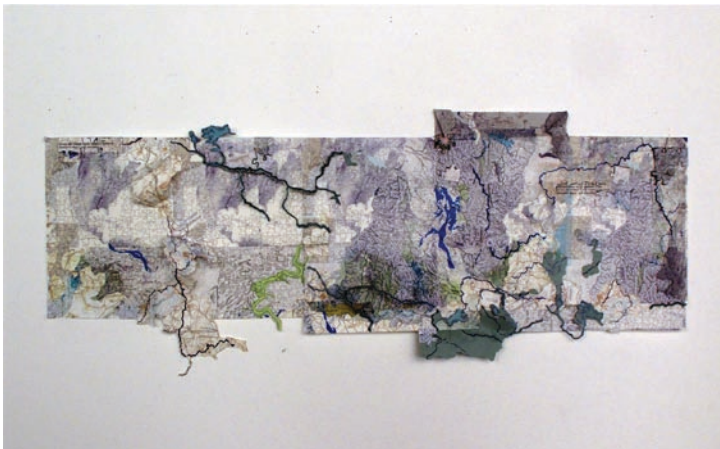
My Lamp to Light You on Your Way, Cambridge Art Association,
Cambridge, MA. Juror's Choice Award, 2011

In-Between, Inaugural Regional Show, Worcester State College,
Worcester, MA, 2010



PHYLLIS EWEN

Somerville, MA



Thinking Like a River: Still Standing, 2011
acid free paper collage
23" x 54"
\$3,200

EDUCATION

Brandeis University, BA
Harvard University MA, MAT

RECENT EXHIBITIONS

Appearances, Schoolhouse Gallery, Provincetown MA 2011

Corrientes Mundiales, Obras De Phyllis Ewen, Galería
Espacio Abierto, Havana, Cuba, 2010-2011

The Space Between: A Collaboration, Marran Gallery,
Cambridge, MA, 2010

...And Sweeps Me/Away, Curated by Barbara O'Brien,
A.I.R. Gallery, Brooklyn, New York, 2010

ALICE-LEIGH FARAMARZPOUR

Sudbury, MA



Angel's Trumpets, 2010
colored pencil on water color paper
82" x 42"
\$5,000

EDUCATION

Massachusetts College of Art and Design, BFA
Framingham State University, MA

RECENT EXHIBITIONS

One Woman Show, Volks Theater, Wayland, MA

One Woman Show, Weston Middle School, Weston, MA

Group Exhibition, F. Scott Gallery, Sudbury, MA

Off the Wall, Danforth Museum of Art,
Framingham, MA, 2009

NAN HASS FELDMAN

Framingham, MA

Table in Sorrento, 2000
oil on panel
30" x 30"
\$3,800

EDUCATION

State University of New York, Buffalo, BFA
Goddard College, MA
Vermont College of Fine Arts, MFA

RECENT EXHIBITIONS

The McIninch Art Gallery, Southern New Hampshire University,
Manchester, NH, 2010

The French Cultural Center of Boston, MA, 2010

Newton Free Library, Newton, MA, 2009

Artana Gallery, Brookline, MA, 2009



ELLEN FISHER

Newton, MA

Lost Toy, 2011
archival inkjet and colored pen
16" x 20"
\$640

EDUCATION

School of the Museum of Fine Arts/Tufts University, MA

RECENT EXHIBITIONS

Unscripted, Fountain Street Fine Art, Framingham, MA, 2011

Collective, Galatea Gallery, Boston, MA 2010

New Directions '09, Barrett Art Center, Poughkeepsie, NY, 2009

Ready for My Closeup, NewTV Gallery, Newton, MA, 2009



CB FORSYTHE

Newbury, MA



Honorable Mention

Full Circle, 2011
ink, paint, found fibers on antique linen
34" x 33"
\$8,000

EDUCATION

Rhode Island School of Design, BFA

RECENT EXHIBITIONS

Fiber Options: Material Explorations,
Maryland Federation of Art, Annapolis, MD, 2010

Small Matters of Great Importance, Edward Hopper House
Art Center, North Broadway, NY, 2010

24th International Juried Show, Visual Arts Center of
New Jersey, Summit, NJ, 2010

New Directions, Barrett Art Center Galleries,
Poughkeepsie, NY, 2009

LISA FRENCH

Hull, MA



Influence, 2009

oil

18" x 13"

\$4,000

EDUCATION

California State University, Long Beach, BFA,
Certificate Program in Biomedical Arts
Goddard College, MFA

RECENT EXHIBITIONS

21st Members Open, Society of Illustrators, New York, NY, 2011

Illustrators Who Teach, Society of Illustrators, New York, NY,
2010

Artists in the Arboretum, Arnold Arboretum, Jamaica Plain,
MA, 2010

Selections 10, Bakalar and Paine Galleries, Massachusetts
College of Art and Design, Boston, MA, 2010

JUDITH T. GREENBERG

Needham, MA

Selectively Seeing II, 2011

mixed media

31.25" x 37"

Not for Sale

EDUCATION

Pratt Institute and Carnegie Mellon University, BFA
University of Wisconsin, MFA

RECENT EXHIBITIONS

National Exhibition, Zullo Gallery, Medfield, MA, 2011

Blanche Ames National Juried Exhibition, Easton, MA, 2010

Second National Monotype & Monoprint Juried Exhibition,
Fitchburg Museum of Art, Fitchburg, MA, 2010"



KATHERINE GULLA

West Roxbury, MA

Dapple 6, 2011
transparent Lambda print on Plexiglas
26.5" x 40"
\$2,800
Courtesy of Gallery Kayafas

EDUCATION

Lehman College (CUNY), BFA
Cranbrook Academy of Art, MFA

RECENT EXHIBITIONS

Off the Wall, Danforth Museum of Art, Framingham, MA, 2010

Off the Wall, Danforth Museum of Art, Framingham, MA, 2009

Cast Shadows, Danforth Museum of Art, Framingham, MA 2008

Night and Day, Gallery Kayafas, Boston, MA, 2008



Honorable Mention

STEPHAN HALEY

Mansfield, MA



Nuclear, 2010
devolution
33" x 66"
\$4,800

EDUCATION

University of Massachusetts, Amherst, BFA

RECENT EXHIBITIONS

Winter Juried Exhibition, Art Complex Museum, Duxbury, MA, 2011

Off the Wall, Danforth Museum of Art, Framingham, MA, 2010

Winter Juried Exhibition, Art Complex Museum, Duxbury, MA, 2010

Off the Wall, Danforth Museum of Art, Framingham, MA, 2009

SOL HARTMAN

Boston, MA



Disgruntled, 2010
oil on canvas
36" x 36"
\$4,500

EDUCATION

Colby College

RECENT EXHIBITIONS

Inner Essence, The Gallery at the Piano Factory,
Boston, MA, 2011

21st Annual Benefit Art Auction, Massachusetts College of Art
and Design, Boston, MA, 2010

MARY TINKER HATCH

Wayland, MA

Primordial Matter II, 2011
oil, pigment on paper
38" x 29"
\$2,000

EDUCATION

Carnegie Mellon University, BFA
Brooklyn Museum School
Regis College

RECENT EXHIBITIONS

Gestural, Towne Art Gallery, Wheelock College,
Boston, MA, 2010

Off the Wall, Danforth Museum of Art, Framingham, MA, 2010

Massachusetts Artists 2009, The Brush Gallery,
Lowell, MA, 2009

Off the Wall, Danforth Museum of Art, Framingham, MA, 2009



DAVID G. HAWKINS

Auburndale, MA

Two Women in Nature, 2010
photograph, ultrachrome K3 inkjet print
21" x 28.5"
\$195

RECENT EXHIBITIONS

PhotoPlace Open, PhotoPlace Gallery, Waterbury, VT, 2010

Newton Open Studios Juried Show, Newton Cultural Center,
Newton, MA, 2010

Black & White, PhotoPlace Gallery, Waterbury, VT, 2011



GREG HEINS

Boston, MA



Cemetery Hedge, 2011
pigment inkjet print
23" x 13"
\$750

RECENT EXHIBITIONS

New England Photography Biennial, Danforth Museum of Art,
Framingham, MA, 2009

RACHEL HELLMANN

Chelsea, MA



Whitescapes 5, 2009
oil on canvas
72" x 96"
\$4,500

EDUCATION

University of Dayton, BFA
Boston University, MFA

RECENT EXHIBITIONS

Rachel Hellmann: Whitescapes, Greenleaf Gallery,
Whittier College, Whittier, CA, 2011

White Matter, FPAC Gallery, Boston, MA, 2011

Faculty Exhibit: ArtSpace, Northern Essex Community
College, Haverhill, MA, 2010

Topos: Topography in Paint, Maynard ArtSpace,
Maynard, MA, 2009

JEFFREY HEYNE

Boston, MA

Fascia: Right, 2009
digital print on Dibond panel
31" x 30"
\$1,500

EDUCATION

University of Cincinnati, BA

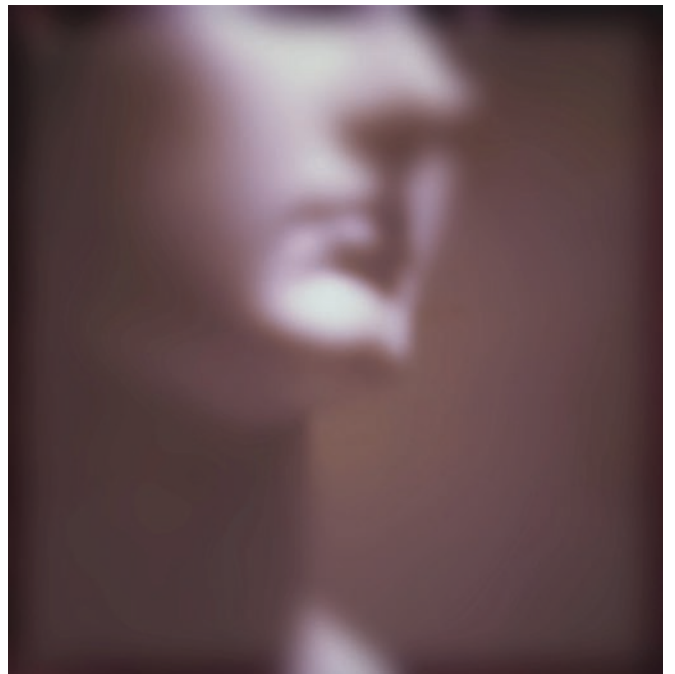
RECENT EXHIBITIONS

MOVE!, NK Gallery, Boston, MA, 2010

Alone | Together, 13 Forest Gallery, Arlington, MA, 2010

MonomerDimerTrimerPolymer, Melle Finelli Studio,
Boston, MA, 2009

SPARK, Massachusetts College of Art and Design,
Boston, MA, 2009



SUZANNE HODES

Waltham, MA

Fall Reflections, 2010

oil on canvas

50" x 36"

\$10,500

EDUCATION

Radcliffe College; Brandeis University, BFA

Columbia University, MFA

RECENT EXHIBITIONS

Boston Printmakers North American Print Biennial, Danforth Museum of Art, Framingham, MA, 2011

Monotype Guild of New England: Second National Monotype Exhibition, Fitchburg Art Museum, Fitchburg, MA, 2010

thINK The Boston Printmakers Members Show, Walnut Hill School for the Arts, Natick, MA, Huntsville Museum of Art, Huntsville, AL, and Zullo Gallery, Medfield, MA, 2010

Paintings, Fidelity Space at Fidelity Investments, World Trade Center, Boston, MA, 2009



CRAIG C. HOFFMAN

Marlborough, MA



Leech, 2007

oil on canvas

54" x 24"

\$2,500

EDUCATION

Fontbonne University, MFA, MA

RECENT EXHIBITIONS

MFA Graduate Thesis Show, Fontbonne University, St. Louis, MO, 2010

MA Graduate Thesis Show, Fontbonne University, St. Louis, MO, 2009

Microcosmic Exploration II, Art Dimensions Gallery, St. Louis, MO, 2009

JILL HOY

Somerville, MA



Running the Esplanade, 2007
oil on linen
48" x 50"
\$10,000

EDUCATION

University of California, Santa Cruz, BA

RECENT EXHIBITIONS

Landscapes of Coastal Maine, Jill Hoy Gallery, Stonington, ME

Elemental Rhythms, Thos. Moser, Freeport, ME

Jill Hoy's America, Nye Gallery, Oak Bluffs, MA, 2009

New Paintings, Thos. Moser, Boston, MA 2008

BROR HULTGREN

Ipswich, MA

Prelude, 2010
monoprint on handmade paper and video animation
8.5" x 21" (monoprint only)
\$1,500

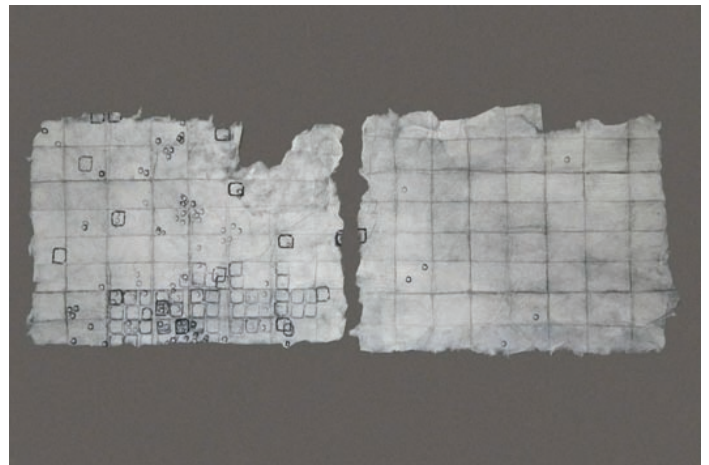
RECENT EXHIBITIONS

Sources | Origins: National Show, South Shore Art Center, Cohasset, MA, 2011

ExPRESSIONs, Monotype Guild of New England, Zullo Gallery, Medfield, MA, 2011

2nd National Juried Monotype and Monoprint Exhibition, Monotype Guild of New England, Fitchburg Art Museum, 2010

Art Meets Music, Music on Monhegan, Monhegan Island, ME, 2010



STELLA JOHNSON

Watertown, MA

The Bus, Crete, Greece, 2011
archival pigment print
24" x 36"
\$2,000

EDUCATION

San Francisco Art Institute, BFA
Boston University, MS

RECENT EXHIBITIONS

The Worldwide Photography Awards, Palais de Glace,
Buenos Aires, Argentina, 2011

Storytellers, Panopticon Gallery, Boston, MA, 2011

Al Sol, Blue Sky Gallery, Portland, OR, Haggerty Museum of
Art, Marquette University Milwaukee, WI, Southeast Museum
of Photography, Daytona State College, Daytona, FL, Gallery,
Middle Tennessee State University, Murfreesboro, TN, and The
University of Maine Museum of Art, Bangor, ME, 2008-2010

Off The Wall, Danforth Museum of Art, Framingham, MA, 2010



COURTNEY JORDAN

Chelsea, MA



Tertiary Event, 2010
gouache, graphite and ink on Duralar
23" x 34.5"
\$6,500

EDUCATION

Rhode Island School of Design, BFA
Maryland Institute College of Art, MFA

RECENT EXHIBITIONS

Isolated Testimonies, Southeastern Illinois College,
Harrisburg, IL, 2011

Sprawl, FPAC Gallery, Boston, MA, 2010

Aspect:Ratio, Irvine Contemporary, Washington, DC, 2008

Sondheim Prize Semi-Finalist Exhibition, Meyerhoff Gallery,
MICA, Baltimore, MD, 2008

BRIAN KAPLAN

Brookline, MA



Sandcastle Resort, Provincetown, 2011

archival inkjet print

30.5" x 36.5"

\$1,400

RECENT EXHIBITIONS

Contemporary Culture, Panopticon Gallery, Boston, MA, 2011

Off the Wall, Danforth Museum of Art, Framingham, MA, 2010

16th Juried Exhibition, Griffin Museum of Photography, Winchester, MA, 2010

28th Annual Juried Membership Exhibition, Houston Center for Photography, Houston, TX, 2010

LAURIE KAPLOWITZ

Boston, MA

Butterfly Mask, 2011

acrylic on board

36" x 36"

\$7,000

EDUCATION

Boston University, BFA

American University, MFA

RECENT EXHIBITIONS

MCC Fellows/Finalists, Shipyard Gallery, South Shore Art Center, Cohasset, MA, and Concord Art Association, Concord, MA, 2011

Recent Work, Nesto Gallery, Milton Academy, Milton, MA, 2009

All in the Family, Katzen Arts Center, American University, Washington, DC, 2007

Humanly Possible, New Bedford Art Museum, New Bedford, MA, 2007



LISA KESSLER

Boston, MA

Shrubs (From the Series Seeing Pink), 2007
archival digital print
22" x 28"
\$1,000

EDUCATION

Brown University, BA
Boston University, MS

RECENT EXHIBITIONS

Seeing Pink, Davis Orton Gallery, Hudson, NY, 2010

I-95 Triennial Invitational Exhibition, University of Maine
Museum of Art, Bangor, ME, 2010

New England Photography Biennial, Danforth Museum of Art,
Framingham, MA, 2009

*Facing Peace: Struggles, Strengths, Strategies of Families
Surviving Violence*, Lesley University Gallery,
Cambridge, MA, 2008



GARY KOEPPPEL

Roslindale, MA



Floating Long Pond, 2007
oil on linen
38" x 24"
\$2,000

EDUCATION

Maryland Institute College of Art, BFA

RECENT EXHIBITIONS

Northeast Prize Show, Cambridge Art Association,
Cambridge, MA, 2010

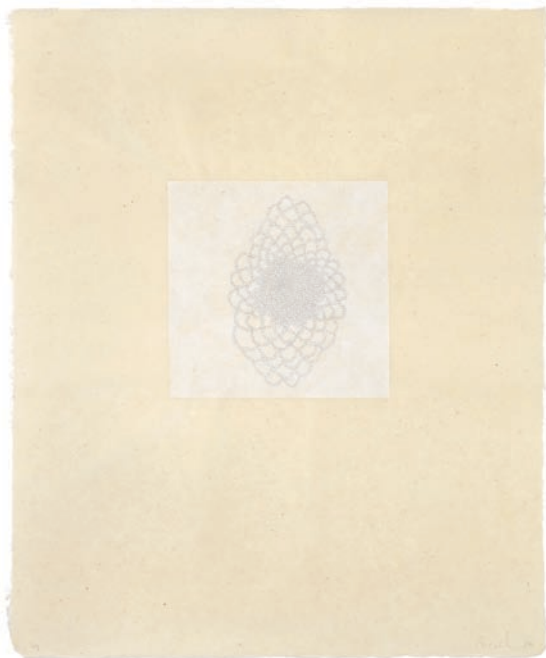
Darkness/Light, Cambridge Art Association,
Cambridge, MA, 2010

Francis N. Roddy Open Competition, Concord Art Association,
Concord, MA, 2009

Northeast Prize Show, Cambridge Art Association,
Cambridge, MA, 2009

LOUISE KOHRMAN

Northampton, MA



Untitled (from Lace Series), 2010
intaglio with gampi chine colle on kitakata
20.5" x 17"
\$4,500

EDUCATION

Smith College, BA and MA
Rhode Island School of Design, MFA

RECENT EXHIBITIONS

Paperworks, PCS80, Holyoke, MA, 2011

Here and Now: New Prints from the Flat File, Zea Mays
Printmaking Gallery, Florence, MA, 2011

Open International Print Competition, The Poly Arts Centre,
Falmouth, Cornwall, UK, 2011

Zea Mays in the UK and Ireland, School of Art Gallery and
Museum at Aberystwyth University, Aberystwyth, Wales, UK, and
Lorg Fine Printmakers Gallery, Galway, Ireland, 2011

JERRY LAINOFF

Somerville, MA

Untitled GA #2, 2011
polymer resin mixed media
36" x 40"
\$3,800

EDUCATION

Washington University, BFA
School of Museum of Fine Arts/ Tufts University, MFA

RECENT EXHIBITIONS

Off the Wall, Danforth Museum of Art, Framingham, MA, 2009

20th Anniversary Exhibit Founding Members Show,
Brickbottom Artists Building, Somerville, MA, 2008

Off the Wall, Danforth Museum of Art, Framingham, MA, 2008



CHRISTOPHER LAMBERG-KARLOVSKY

Somerville, MA

Moonlight Canoeside, 2009

mixed media

17" x 19" x 11"

\$25,000

EDUCATION

Bates College, BA

Boston University, MFA

School of The Museum of Fine Arts, MFA

RECENT EXHIBITIONS

Christopher Lamberg-Karlovsky: Travelling Suite, Ars Libri, Boston, MA, 2011

Travelling Scholars, Museum of Fine Arts, Boston, MA, 2010



DEANNA LEAMON

Worcester, MA



Forgotten Face, 2010

oil stick on board

55" x 48"

\$3,500

RECENT EXHIBITIONS

Portraits of the Human Heart, Higgins School for the Humanities, Clark University, Southborough, MA, 2011

Group Show, Sprinkler Factory, Worcester, MA, 2011

Juried Group Show, Arts Worcester, Aurora Gallery, Worcester, MA, 2011

Group Show for Artists-in-Residence, McColl Center for Visual Art, Charlotte, NC, 2010

JAEOK LEE

Sudbury, MA



Each Seed, A New Life No. 1, 2009
clay and wood
18" x 21" x 2"
\$1,500

EDUCATION

University of Massachusetts, Boston
Massachusetts College of Art
School of the Museum of Fine Arts
Harvard University

RECENT EXHIBITIONS

Annual Ceramics & Painting Show, Twin Ash Farm,
Sudbury, MA, 2004-2010

Home Studio Exhibition, Sudbury Open Studios,
Sudbury, MA, 2007, 2009, 2010

Ceramic Studio Spring & Winter Shows,
Harvard University, Cambridge, MA, 1997 - 2008

HOLLY LOMBARDO

Natick, MA

Yellow Birch Grove, 2011
acrylic
24" x 18"
\$425

RECENT EXHIBITIONS

Unscripted, Fountain Street Fine Art Studios,
Framingham, MA, 2011



GENE MACKLES

Aburndale, MA

Greenville Road, 2008

oil on canvas

24" x 36"

\$6,400

EDUCATION

Dartmouth College, BA

RECENT EXHIBITIONS

Members Juried 1 Competition, Concord Art Association, Concord, MA, 2011



ILANA MANOLSON

Concord, MA



Harbinger IV, 2009

oil on board

24" x 24"

\$4,500

EDUCATION

Rhode Island School of Art and Design, BA

RECENT EXHIBITIONS

State of Art: Massachusetts Cultural Council Fellows and Finalists, Concord Art Association, Concord, MA, 2011

Stasis/Flux, Clark Gallery, Lincoln, MA, 2010

Untitled, Artists Proof South Africa, Johannesburg, South Africa, 2010

Untitled, Jason McCoy Gallery, New York, NY, 2009

DENISE D. MANSEAU

North Billerica, MA



Vestiges, 2010
ink and graphite on tracing paper
48" x 18"
\$750

EDUCATION

University of Massachusetts, Lowell, BFA

RECENT EXHIBITIONS

Massachusetts Artists 2011: Contemporary Work by the Artists of Massachusetts, Brush Art Gallery, Lowell, MA, 2011

Ephemera, DeLuce Gallery, Northwest Missouri State University, Maryville, MO, 2011

Tapped: An Exhibit of Works by Students and Their Professors (Past or Present) Manifest Creative Research Gallery and Drawing Center, Cincinnati, OH, 2011

Secrets, 119 Gallery, Lowell, MA, 2010

FERNANDO MARTINS

Winchendon, MA

Patterns of Light and Shadow, 2010
photography
17" x 11"
\$500

EDUCATION

New England School of Art and Design at Suffolk University, BA

RECENT EXHIBITIONS

Off the Wall, Danforth Museum of Art, Framingham, MA, 2010

Community of Artists, Danforth Museum of Art, Framingham, MA, 2010

75th Regional Exhibition of Art & Craft, Fitchburg Art Museum, Fitchburg, MA 2010

15th Juried Exhibition, Griffin Museum of Photography, Winchester, MA, 2009



RANIA MATAR

Brookline, MA

Shannon 21, Boston, 2010
archival pigment print on Baryta paper
28" x 40"
\$2,300

EDUCATION

American University of Beirut
Cornell University, BA

RECENT EXHIBITIONS

Rebirth Group Exhibition, Beirut Exhibition Center,
Beirut, Lebanon, 2011

Teenagers: Portraits of Identity and Expression,
Houston Centre for Photography, Houston, TX, 2011

A Girl and Her Room, De Santos Gallery, Houston, TX, Gallery
of Photography B&B, Bielsko-Biala, Poland, Gallery Kayafas,
Boston, MA, 2010-2011

XXI: Conflicts in a New Century, Cultural Center,
Dallas, TX, 2011



1st Prize Winner of Off the Wall

TIM MCDONALD

Fitchburg, MA



Gathering, 2011
watercolor and gouache on paper
36" x 28"
\$1,200

RECENT EXHIBITIONS

Part and Process: Collage, Bromfield Gallery,
Boston, MA, 2011

Ritual Elements, Albion College, Albion, MI, 2011

A Wild Edge, Bromfield Gallery, Boston, MA, 2010

HELEN MEYROWITZ

Needham, MA



Mad Hatter Series, Comp #1, 2010
graphite and oil bar on BFK Rives paper
34" x 26"
\$3,000

EDUCATION

Long Island University, MA

RECENT EXHIBITIONS

The Carapace Series, Kantar Fine Arts, Newton, MA, 2011

The Wind Beneath my Wings: Baskin Suite, Alzheimer's Association, Watertown, MA, and the National Alzheimer's Association, Chicago, IL, 2009

Helen Meyrowitz: Uprooted, Danforth Museum of Art, Framingham, MA, 2007

AMY B. MORAN

Bolton, MA

Waiting for Spring, 2011
watercolor
26" x 36"
\$700

RECENT EXHIBITIONS

Winter Juried Show, Duxbury Art Association, Duxbury, MA, 2011

Hudson Arts Alliance Member Show, Hudson, MA, 2011

Hudson Arts Alliance Fall Juried Show, Hudson, MA, 2010

Solo Show, Sherborn Library, Sherborn, MA, 2010



MARTIN MUGAR

Durham, NH

#32, 2010
oil and wax on board
24" x 24"
\$2,200

EDUCATION

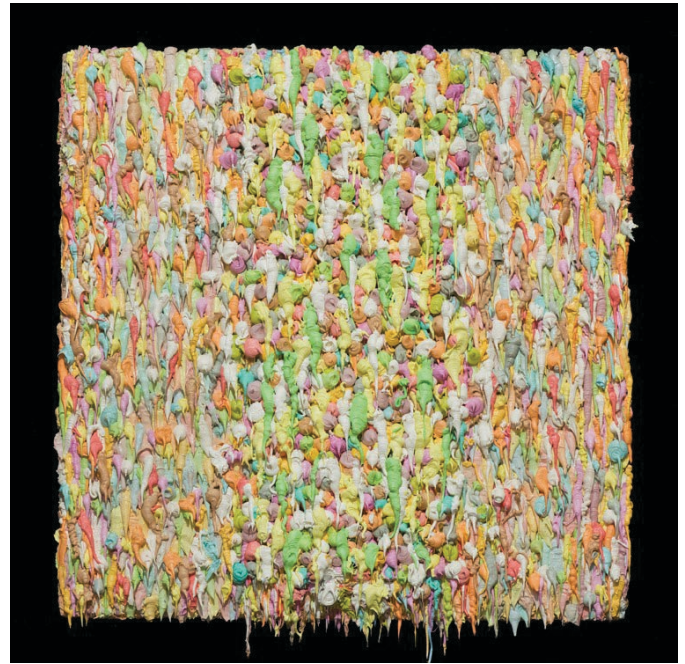
Yale University, MFA

RECENT EXHIBITIONS

Papillon, Bow Street Gallery Cambridge, MA, 2010

Off the Wall, Danforth Museum of Art, Framingham, MA, 2010

Solo Exhibition, The Bowery Gallery, New York, NY, 2008



JOAN MULLEN

Newton, MA



Grace III, 2010
ultracal, oil paint, wax medium
20" x 18" x 120"
\$8,400

EDUCATION

Maryland Institute College of Art, BFA
Rutgers University, MFA

RECENT EXHIBITIONS

Solo Exhibition, Galatea Fine Arts, Boston, MA, 2010

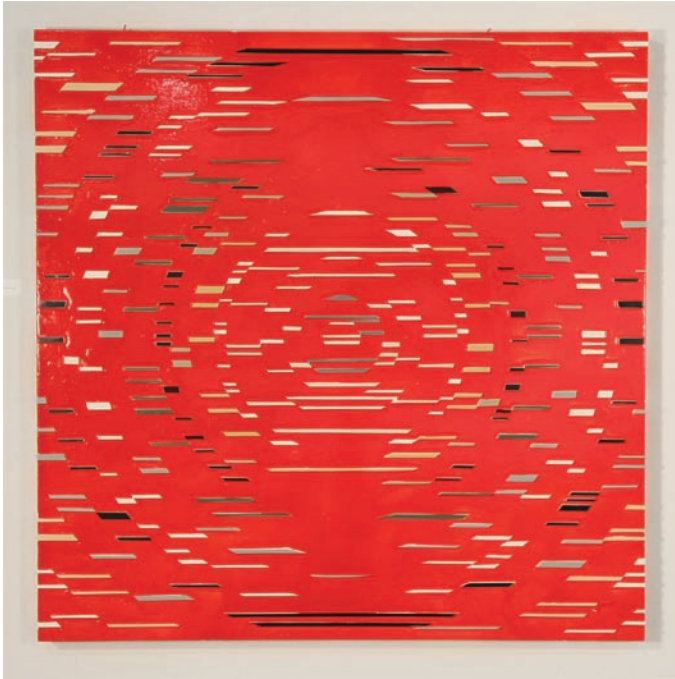
Collective: First Annual Juried Exhibition,
Galatea Fine Art Gallery, Boston, MA, 2010

New Visions: Tumble, Arsenal Center for the Arts,
Watertown, MA, 2010

Community of Artists, Danforth Museum of Art,
Framingham, MA, 2010

MATTHEW NEUMAN

Brookline, MA



Fifties Remake, 2011
acrylic and wood on panel
60" x 60"
\$8,000

EDUCATION

Skidmore College, BA
Boston University, MFA

RECENT EXHIBITIONS

MFA Thesis Exhibition, Boston University, Boston, MA, 2011

Commonwealth Gallery Graduate Candidate Exhibition,
Boston University, Boston, MA, 2010

Boston Young Contemporaries Annual Juried Exhibition,
855 Gallery, Boston, MA, 2010

Big N' Bold, Aspen Chapel Art Gallery, Aspen, CO, 2009

ROSE OLSON

Beverly, MA

Portrait of a Baltic Birch, 2010
acrylic on Baltic birch veneer
12" x 12" x 3"
\$900

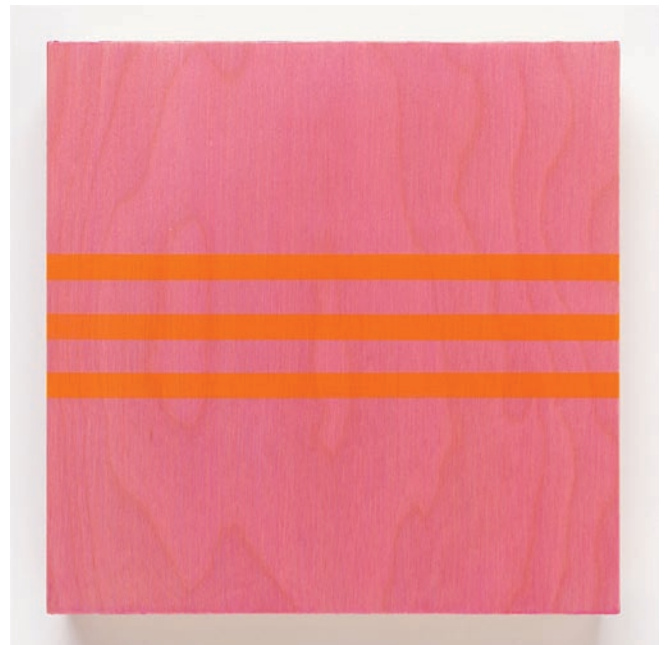
RECENT EXHIBITIONS

Dialogues, Kingston Gallery, Boston, MA, 2011

Massachusetts Artists, Brush Gallery, Lowell, MA, 2011

Seeing in Color, 119 Gallery, Lowell, MA, 2011

Barrington Center for the Arts, Gordon College,
Wenham, MA, 2010



JEAN ORMAZA

Natick, MA



Deep River, 2011
graphite on paper, 198" x 51"
\$4,000

EDUCATION

Alfred University, BFA; Vermont College, MFA

RECENT EXHIBITIONS

Ambulo, Brant Gallery, Massachusetts College of Art, Boston, MA, 2010

Here, There, and Everywhere: Anticipating the Art of the Future, The Fall, Collaboration with Transcultural Minga, Central Gallery, University of Massachusetts, Amherst, MA and FLADES Gallery, Quito, Ecuador, 2009

Post-conceptual Art in Ecuador, Collaboration with Juan Ormaza, Banco Central, Quito, Ecuador, 2007

Testigos, Collaboration with Juan Ormaza, Paine Gallery, Massachusetts College of Art and Design, Boston, MA, 2007

MICHAEL ORZECH

Sudbury, MA



It's About #@\$!\$ Time*, 2007
oil on paper, 13" x 35"
Not for Sale

EDUCATION

New England School of Art and Design

RECENT EXHIBITIONS

Dreamscapes: Michael Orzech, Amazing Things Art Center Satellite Gallery, Framingham, MA, 2011

Sudbury Art Association Group Show, Goodnow Library, Sudbury, MA, 2010

Home Studio Exhibition, Sudbury Open Studios, Sudbury, MA, 2010

Solo Exhibition, Out of the Blue Art Gallery, Cambridge, MA

CHRISTOPHER PULLMAN

Cambridge, MA

Underneath, Cambridge Beach, 2006
watercolor
9" x 12"

EDUCATION

Princeton University, BA
Yale University, BFA, MFA

RECENT EXHIBITIONS

Rocks + Other Riddles, Paul Dietrich Gallery, Cambridge Seven Associates, Cambridge, MA, 2011

Oil and Watercolor: Cape Ann Paintings by Christopher Pullman, Cape Ann Museum, Gloucester, MA



MARILYN RANKER

Cambridge, MA



Honorable Mention

Barely Connected - Jointly Severed, 2011
wood, wire, paint
52" x 20" x 20"
\$2,800

EDUCATION

Penn State University, BFA
University of Kentucky, MFA

RECENT EXHIBITIONS

Sixth Annual Juried Exhibition, Tufts University Art Gallery, Aidekman Arts Center, Medford, MA, 2009

Marilyn Ranker: Open Doors, Bromfield Gallery, Boston, MA, 2008

Object/Artifact: Marilyn Ranker and Rebecca Seeman, Fort Point Arts Community Gallery, Boston, MA, 2008

Environments...A Sense of Place, Bryan Gallery, Rocky Neck Art Colony, Gloucester, MA, 2006

JOHN RICH

Brookline, MA



Splayed Tree 3, 2011
ink jet print - composite photograph
50" x 40"
\$2,000

RECENT EXHIBITIONS

NEO Featured Artist, Photographic Resource Center,
Boston, MA, 2011

Off The Wall, Danforth Museum of Art,
Framingham, MA, 2010

Solo Exhibition, Winchester Public Library,
Winchester, MA, 2010

Miles to Go: Portraits of Senior Athletes, Griffin Museum of
Photography at The Cambridge Homes, Cambridge, MA, 2010

BEVERLY RIPPEL

South Easton, MA

Blue Cap Gun III, 2007
oil on linen
40" x 52"
\$6,800

EDUCATION

University of Maine, BA

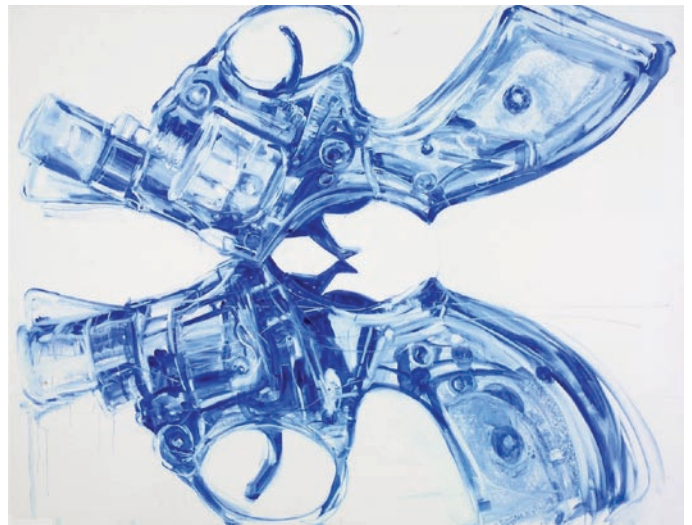
RECENT EXHIBITIONS

Biennial Exhibition 2011, The Portland Museum of Art,
Portland, ME, 2011

Massachusetts Artists, Brush Gallery, Lowell, MA, 2011

I-95 Triennial Invitational Exhibition, University of Maine
Museum of Art, Bangor, ME, 2010

21st Annual International Juried Exhibition, Viridian Artists,
New York, NY, 2010



REBECCA GRAY ROLKE

Dunbarton, NH

Birds See in Three Dimensions, 2011

oil on board

20" x 16"

\$4,000

EDUCATION

Massachusetts College of Art and Design, BFA

RECENT EXHIBITIONS

The Wingspread Legacy, Courthouse Gallery,
Ellsworth, ME, 2010

Wingspread at Maison Suisse, Maison Suisse Inn,
Northeast Harbor, ME, 2009

Off the Wall, Danforth Museum of Art, Framingham, MA, 2009

Great Harbor Maritime Museum, Northeast Harbor, ME, 2009



NAN RUMPF

Wellesley, MA



The Journey, 2009

watercolor

20" x 14"

\$2,175

EDUCATION

University of Iowa, BA

RECENT EXHIBITIONS

Solo Exhibition, Ashland Public Library, Ashland, MA, 2011

Fountain Street Fine Art Gallery, Framingham, MA, 2011

Members Juried I: Painting and Sculpture, Concord Art
Association, Concord, MA, 2010

LISA GABRIELLE RUSSELL

Braintree, MA



Emergence #401, 2011
oil on canvas
10" x 11"
\$3,600



Emergence #407, 2011
oil on canvas
10" x 12"
\$3,600

EDUCATION

Massachusetts College of Art and Design, BFA
School of the Museum of Fine Arts/ Tufts University, MFA

RECENT EXHIBITIONS

Off The Wall, Danforth Museum of Art, Framingham, MA, 2010

Abstraction Now: New Trends in Abstraction, Eclipse Mill Gallery, North Adams MA, 2010

Red: It's More Than a Color: Metaphor, Feeling, Idea, Kathryn Schultz Gallery, Cambridge, MA, 2010

Opposites Attract, Arts Alliance Center, San Jacinto College, Houston TX, 2008

SUSAN SCHMIDT

Cambridge, MA

Don't Book, 2008
artist's book
5" x 7" x 24"
\$300

EDUCATION

Pennsylvania State University, MFA

RECENT EXHIBITIONS

Beyond the Book, Honan Allston Branch, Boston Public Library, Boston, MA, 2010

The Artful Scriptorium, climate / gallery, New York, NY, 2010

thINK, Boston Printmakers Members Show, Zullo Gallery, Medford, MA, 2010

Black & White, Brickbottom Gallery, Somerville, MA, 2010



Honorable Mention

JOHN SCHULZ

Andover, MA

Untitled Woodcut (Repetition is a Form of Change), 2010
woodcut
30" x 24"
\$300

EDUCATION

University of Illinois, Urbana-Champaign, MFA

RECENT EXHIBITIONS

Michael Krueger, Randy Bolton, John Schulz, Glasgow Print Studio, Glasgow, Scotland, 2010

Strange Loops curated by Jose-Luis Blondet, Boston Center for the Arts, Boston, MA, 2010

1x4 curated by Greg Menkoff, Gallery Kayafas, Boston, MA, 2010

Our Stories: Contemporary Narrative Printmaking: USA, Poland, Great Britain, John David Mooney Foundation, Chicago, IL, 2009



TOBY SISSON

Worcester, MA



Timeline of Seemingly Unrelated Events IV, 2010
encaustic and mixed media on wood
24" x 48"
Not for Sale

EDUCATION

College of Visual Arts, BFA
University of Minnesota, MFA

RECENT EXHIBITIONS

Sixth Annual Encaustic Invitational, Conrad Wilde Gallery, Tucson, AZ, 2011

All the Time in the World, Clark University, Worcester, MA 2010

Best Foot Forward, Montserrat College of Art, Beverly, MA, 2010

NEW, Fairfield Arts Council Gallery, Fairfield, CT, 2010

ELIZABETH SLAYTON

Jamaica Plain, MA



Onion 3, 2008
oil on canvas
36" x 36"
\$3,200

EDUCATION

School of the Museum of Fine Arts
Massachusetts College of Art and Design

RECENT EXHIBITIONS

Elizabeth Slayton: Paintings, Drawings, and Monoprints,
Pierce Gallery, Cary Memorial Library, Lexington, MA, 2010

Off the Wall, Danforth Museum of Art, Framingham, MA, 2010

Taylor House Art and Music, Jamaica Plain, MA, 2009

Juried Show, Jamaica Plain Open Studios,
Jamaica Plain, MA, 2008

RHONDA SMITH

Cambridge, MA

The Web You Were Born With, 2010
pencil on paper
31.5" x 42.5"
\$1,600

EDUCATION

St. Lawrence University, BA
School of Museum of Fine Arts

RECENT EXHIBITIONS

Massachusetts Artists, Brush Gallery, Lowell, MA, 2011

Sources and Origins, South Shore Community Arts Center,
Cohasset, MA, 2011

Reflections on Nature, Krause Gallery, Providence, RI, 2011

Unhinged, Gallery 263, Cambridge, MA, 2010



KATHY SOLES

Milton, MA

Water Marks: Passing Through, 2010
oil on canvas mounted on board
48" x 68"
\$9,600

EDUCATION

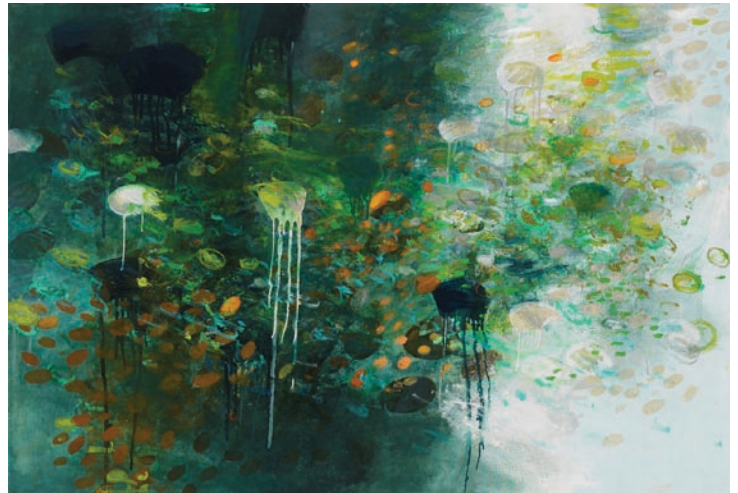
Emmanuel College, BA
American University, MFA
Skowhegan School of Painting and Sculpture
Maryland Institute College of Art

RECENT EXHIBITIONS

Navigations, Apothiki Arts Center, Paros, Greece, 2010

Water Marks, Artists Foundation, Boston, MA, 2009

Sounding Series, Lillian Immig Gallery, Emmanuel College,
Boston, MA, 2008



LESLIE STAROBIN

Needham, MA



Honorable Mention

1.9.44, 2008
photomontage/ Singer Edition Work-on-paper
20" x 20"
\$1,500

EDUCATION

Hampshire College, BA
San Francisco Art Institute, MFA

RECENT EXHIBITIONS

Mobius Gallery, Boston, MA, 2010

Facing the Holocaust, Thorne-Sagendorph Art Gallery,
Keene State College, Keene, NH, 2008

Leslie Starobin, Danforth Museum of Art,
Framingham, MA, 2006

JESSICA STRAUS

Newton, MA



Yellow Pages 5, 2010
wood, paint, Boston Yellow Pages
3.5" x 5" x 2"
\$600

EDUCATION

Kansas City Art Institute, BFA
Cranbrook Academy of Art, MFA

RECENT EXHIBITIONS

Solo Exhibition, Boston Sculptors Gallery, Boston, MA, 2011
Trigger and Reconfigure, Jewett Art Center, Wellesley College, Wellesley, MA, 2011
3D, Gallery NAGA, Boston, MA, 2011
Reshaping Reality, Brattleboro Museum, Brattleboro, VT, 2010

ZSUZSANNA SZEGEDI

Hudson, MA

Temporal Lapse, 2010
video
45" x 20"
Not for Sale

EDUCATION

Massachusetts College of Art and Design, BFA
Janus Pannonius University
Károly Eszterhazy College

RECENT EXHIBITIONS

Temporary Works, Fourth Wall Projects, Boston, MA, 2011
Bumpkin Forward, Mobius, Boston, MA, 2011
Northeast Prize Show, juried by Cheryl Brutvan, Cambridge, MA, 2010
The Lure of Trees, Fruitlands Museum, Harvard, MA, 2009



DIDO THAYER

Boston, MA

Untitled #21, 2010
oil and Venetian plaster on panel
20" x 48"
\$4,000

EDUCATION

Massachusetts College of Art and Design, BFA

RECENT EXHIBITIONS

Reconstructed Landscapes, Soprafina Gallery,
Boston, MA, 2010

Community of Artists, Danforth Museum of Art,
Framingham, MA, 2010

Prints & Paintings/ Pairings by Nine Artists,
Soprafina Gallery, Boston, MA 2010

New Work / Dido Thayer, Soprafina Gallery,
Boston, MA, 2009



STACY THOMAS-VICKORY

Beverly, MA



Leaves, 2011
graphite on paper
38" x 38"
\$2,400

EDUCATION

Montserrat College of Art, BFA
University of Buffalo, MFA

RECENT EXHIBITIONS

Arches Student Show, Faculty, Danforth Museum of Art,
Framingham, MA, 2011

Schlossberg Gallery, Montserrat College of Art, 2010

Printmaking Suite, Schlossberg Gallery,
Montserrat College of Art, 2008

Faculty Show, Winfisky Gallery, Salem State University, 2007

WILLARD TRAUB

Wayland, MA



Cragged Mountain Farm 1, 2010
chromogenic color print
20" x 20"
\$750

RECENT EXHIBITIONS

Solo Exhibition, Wayland Public Library, Wayland, MA

Athens of America, St. Botolph's Club, Boston, MA, 2009

Remnants of the Garden: Photographs by Willard Traub,
Brooklyn Botanic Garden, Brooklyn, NY, 2008

LISA VALERI

Worcester, MA

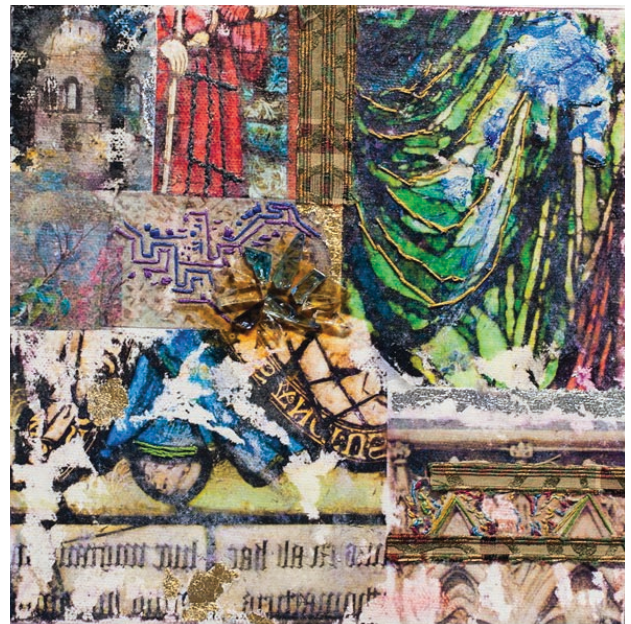
Pilgrimage, 2011
transfers, embroidery, glass, gold leaf and silver leaf
8" x 8"
\$250

EDUCATION

Framingham State University, BA

RECENT EXHIBITIONS

Senior Thesis Exhibition, Mazmanian Gallery, Framingham
State University, Framingham, MA, 2011



MARGARET ROSE VENDRYES

Brookline, MA

Kasai Natalie, 2010

oil and cold wax on canvas and paper

30" x 30"

\$3,500

EDUCATION

Amherst College, BA

Tulane University, MA

Princeton University, PhD

RECENT EXHIBITIONS

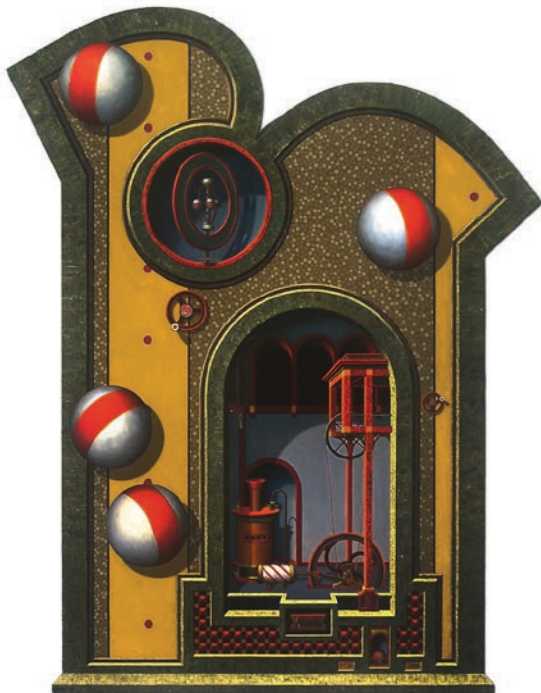
African Divas: Paintings by Margaret Rose Vendryes,
Slater Concourse Gallery, Tufts University, MA, 2011

Gender Matters, Matters of Gender, Center for the Arts
Freedman Gallery, Albright College, PA, 2011



RICHARD C. WHITTEN

Cranston, RI



Macchina (machine), 2009

oil and copper leaf on wood panel

49.5" x 38.5"

Not for Sale

EDUCATION

Yale University, BA

University of California, Davis, MFA

RECENT EXHIBITIONS

Ingenium Mentis, Clark Gallery, Lincoln, MA, 2010

Richard Whitten: Passageways, Recent Paintings, Beard
Gallery, Wheaton College, Norton, MA 2009

8 Visions, Attleboro Arts Museum, Attleboro, MA, 2008

Worlds of Wonder, Lenore Gray Gallery, Providence, RI, 2006

CAROLYN WIRTH

Maynard, MA



I Read Emily Dickinson All Last Winter, 2007
terra cotta, wax, paper, wood, found objects
40" x 32" x 16"
Not for Sale

EDUCATION

Smith College, BA
New York University, MA

RECENT EXHIBITIONS

Art in Nature, Fruitlands Museum, Harvard, MA, 2011

Small Obsession, Somerville Museum, Somerville, MA, 2011

Big Art, Erersom Umbrella, Concord, MA, 2010

Real Lives of Women Artists, Brown Fine Arts Center, Smith College, Northampton, MA, 2010

MARGARET ZALESKI

Newton, MA

Love in Another Language, 2011
mixed media
48" x 36"
\$1,950

RECENT EXHIBITIONS

Art Association, Annual Bonnar Show, New Art Center, Newton, MA, 2011

Off the Wall, Danforth Museum of Art, Framingham, MA, 2010

Small Works - Lincoln Arts Project, Waltham, MA, 2010

Newton Art Association New Members Show, Newton, MA



THERESE ZEMLIN

Waltham, MA

Iterations 1, 2009

inkjet print on cut Japanese paper, insect pins

16" x 20" x 3"

\$1,200

EDUCATION

University of Illinois, Urbana-Champaign, BFA

University of Texas, Austin, MFA

RECENT EXHIBITIONS

In the Spirit of the Chambered Nautilus, NK Gallery,
Boston, MA, 2011

Paper!, Lost Coast Culture Machine, Fort Bragg, CA, 2010

High Fiber, Conrad Wilde Gallery, Tucson, AZ, 2009

Alphabet Project 3 curated by Gayle Caruso and Cathy
McLaurin, Essex Art Center, Lawrence, MA, 2009



Catalog was edited and designed by:

Kristina Wilson, Curatorial Assistant & Museum Registrar, Danforth Museum of Art

Jenna DeLuca, Marketing, Membership & Development Assistant, Danforth Museum of Art